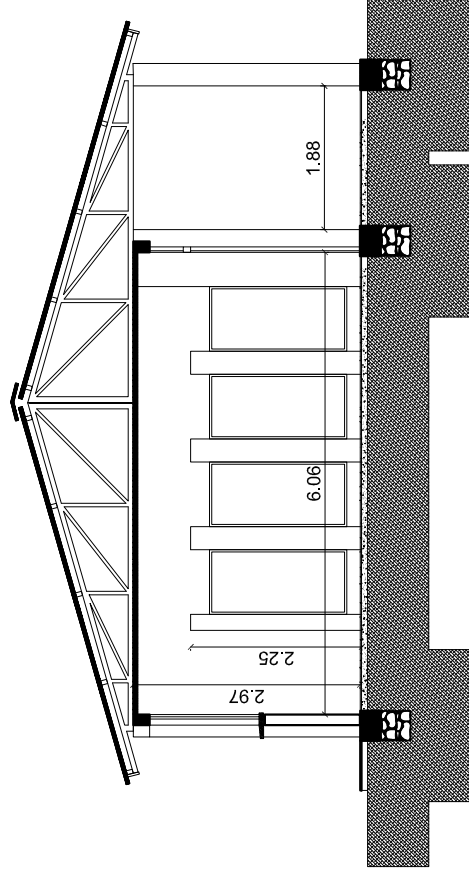
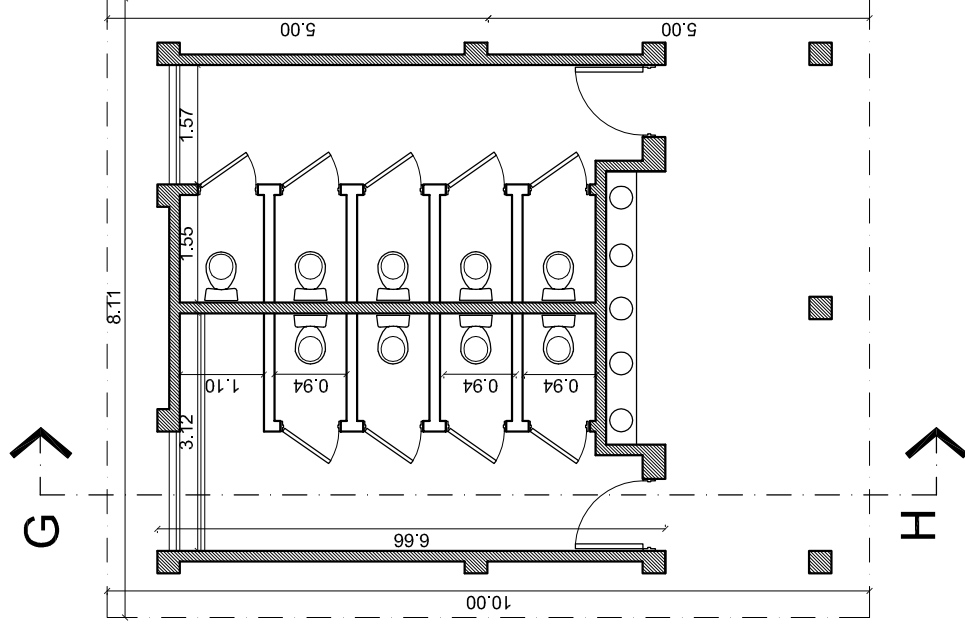


VIEW FRONT



SECTION G-H



UNICEF - Projeto MED

PROJECTO:
Maurício Ganduglia, arq.

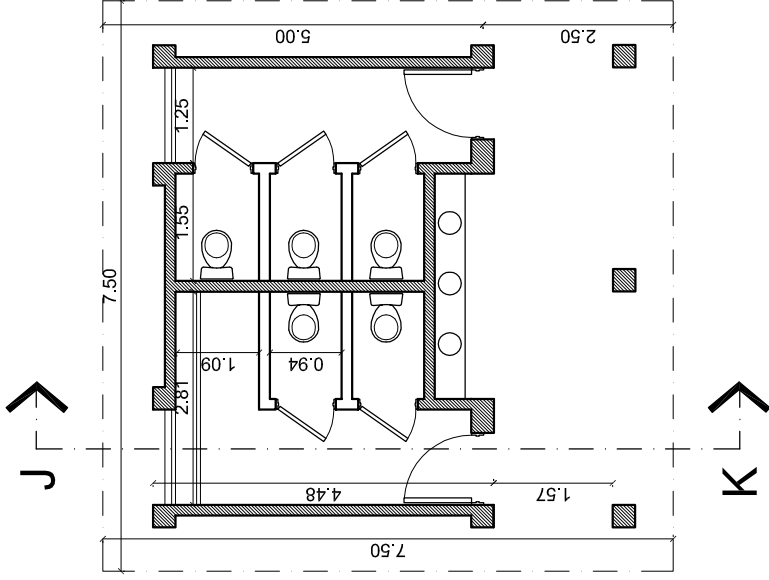
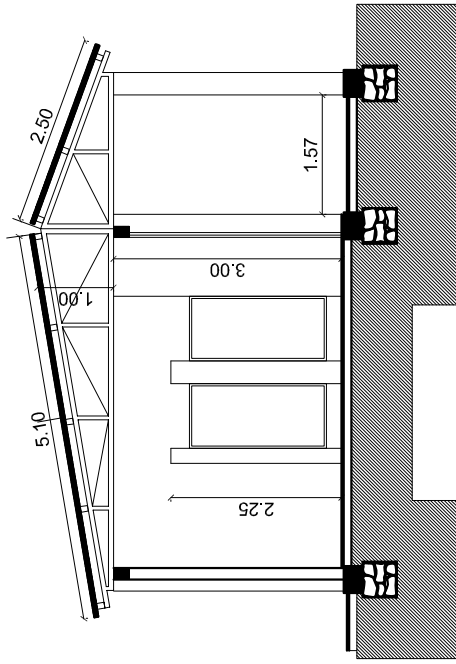
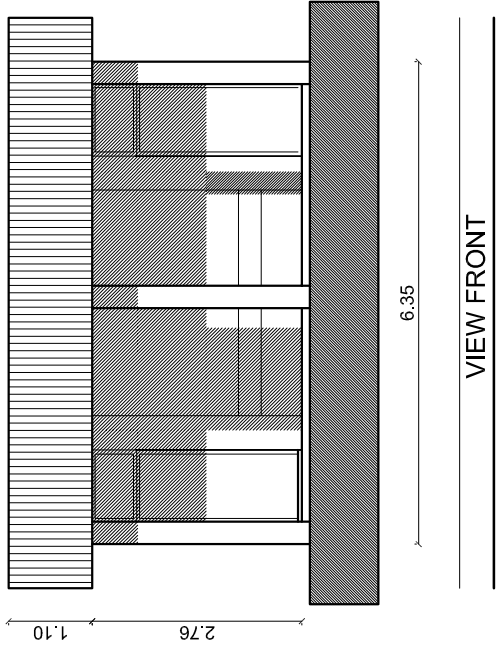
DESENHO:
Maurício Ganduglia, arq.

Child-Friendly School

Conteúdo: Module WC - School 6 Classrooms

Agosto 2007
escala 1:100

folha
08



UNICEF - Projecto MED

PROYECTO:
Mauricio Ganduglia, arq.

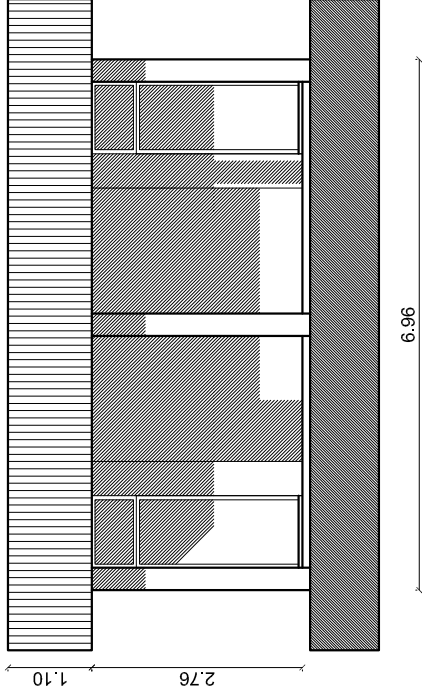
DESENHO:
Mauricio Ganduglia, arq.

Child-Friendly School

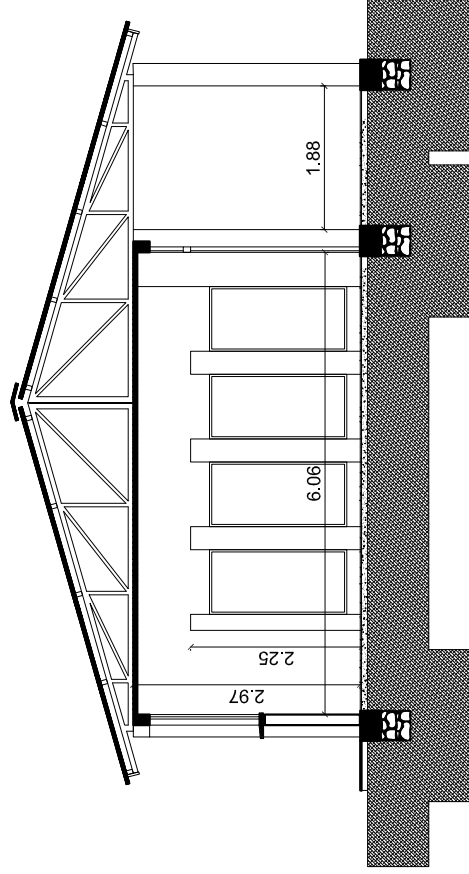
Conteúdo: Module WC - School 3 Classrooms

Agosto 2007
escala 1:100

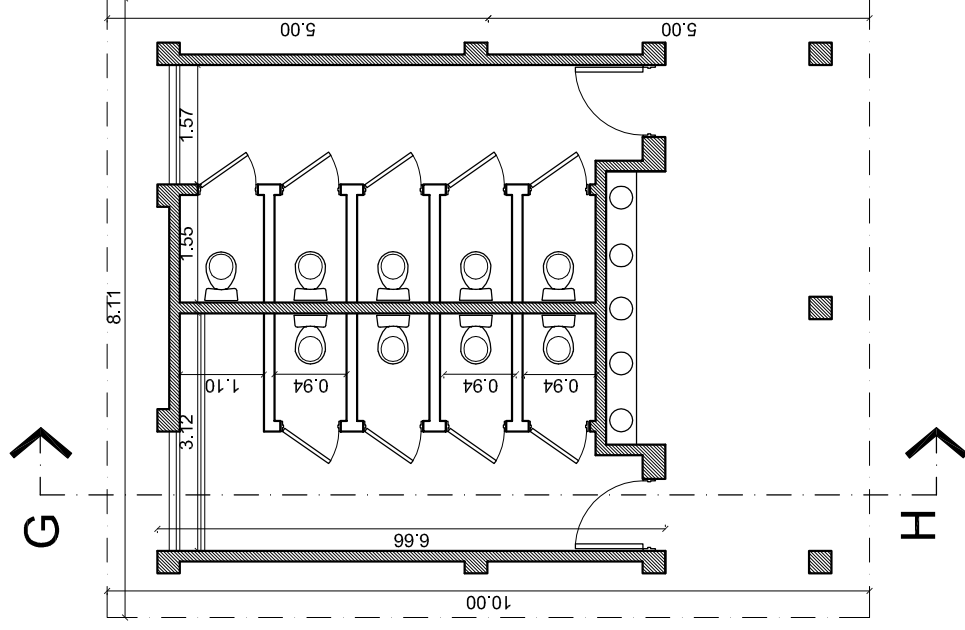
09
de 12



VIEW FRONT



SECTION G-H



UNICEF - Projeto MED

PROJECTO:
Maurício Ganduglia, arq.

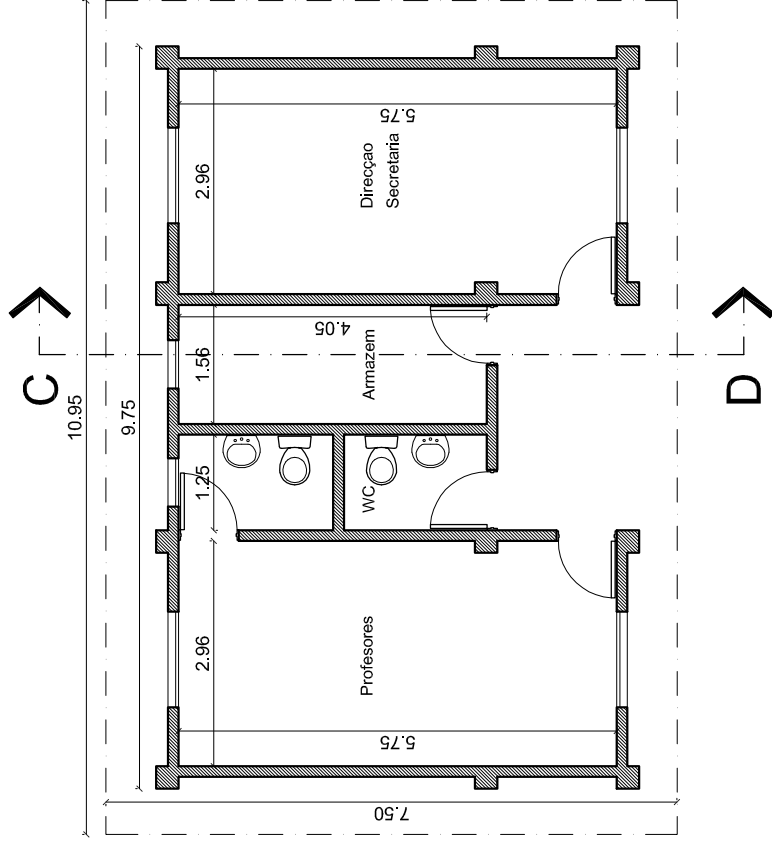
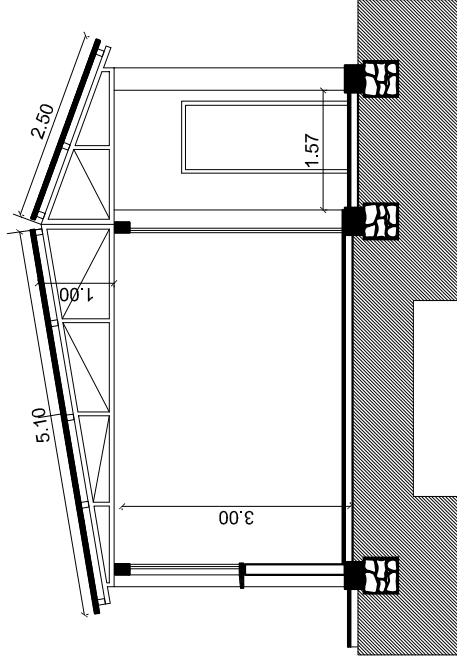
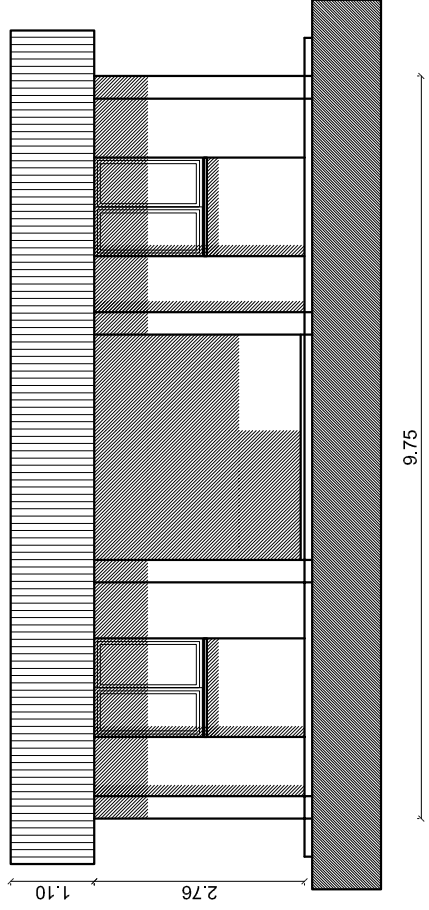
DESENHO:
Maurício Ganduglia, arq.

Child-Friendly School

Conteúdo: Module WC - School 6 Classrooms

Agosto 2007
escala 1:100

folha
08



UNICEF - Projecto MED

PROJECTOU:
Maurício Ganduglia, arq.

Child-Friendly School

Agosto 2007
escala 1:100

DESENHOU:
Maurício Ganduglia, arq.

Conteúdo: Module Direction

folha
06